



ADULT SOCIAL CARE, CHILDREN'S SERVICES AND EDUCATION COMMITTEE

31 MARCH 2022

ADDITIONAL INFORMATION

AGENDA ITEM	ACTION	WARDS AFFECTED	PAGE NO
5. QUESTIONS FROM MEMBERS OF THE PUBLIC AND COUNCILLORS	Decision		3 - 4
7. BUILDING BERKSHIRE TOGETHER - ROYAL BERKSHIRE HOSPITAL REDEVELOPMENT PROGRAMME	Decision		5 - 6
9. ADULT SOCIAL CARE ANNUAL PERFORMANCE REPORT	Decision	BOROUGHWIDE	7 - 16

This page is intentionally left blank

## READING BOROUGH COUNCIL

### ADULT SOCIAL CARE, CHILDREN'S SERVICES AND EDUCATION COMMITTEE

31 MARCH 2022

QUESTION 1 in accordance with Standing Order No.36

Councillor White to ask the Chair of the Committee:

#### Covid and Child and Adolescent Mental Health Services

Green councillors are concerned that Covid has caused an additional toll on the mental health of our young people. Before the pandemic mental health services were already stretched. Child and Adolescent Mental Health Services (CAMHS) support our children in need. What is the target and average length of time a young person in Reading waits for a first appointment with CAMHS? And what is the target and average length of time a person waits for treatment with CAMHS?

**REPLY by the Chair of the Adult Social Care, Children's Services and Education Committee:**

I invite Councillor Terry, the Lead Councillor for Children to make the response on my behalf.

**REPLY by Councillor Terry, Lead Councillor for Children:** I thank Cllr White for his question, as you will see from the information below it was not a straightforward matter to answer this question and so I propose inviting CAMHS to a future ACE meeting to discuss Reading data and local challenges.

CAMHS data is not currently disaggregated to provide a Reading specific response. CAMHS have provided the following information on waiting times for referrals to the specialist mental service (not neurodiversity referrals):

*The only areas of service that have national access and waiting time standards are for children & young people eating disorders and Early Intervention in psychosis, where standards are 1 week for urgent and 4 weeks for routine referrals. Currently within Berkshire CAMHS the average waiting time for mental health referrals, based on rolling 12 months is 12 weeks. For core CAMHS (Specialised Community Team; Anxiety & Depression Pathway) its 29 weeks. There is a triage process in place to respond to urgent referrals.*

*Berkshire-wide referrals to CAMHS have increased by 40% over the past 2 years (from an average of 670 referrals per month pre-pandemic to an average of 940 referrals per month in the last 12 months).*

Brighter Futures for Children will be working with CAMHS & the Clinical Commissioning Group (CCG) to explore ways to share Reading only data in future.

The Berkshire West Safeguarding Children's Partnership monitors our most vulnerable children impacted by mental health. There are currently 4

children from with acute needs in Tier 4 beds. All are for eating disorders. The latest data below indicates an increase in under 18s admitted to hospital increasing from early 2020 but stabilising from this time last year.

**Total number of children 0-18-year-olds admitted to RBFT mental health issues including self-harm**

	Q4 19/20	Q1 20/21	Q2 20/21	Q3 20/21	Q4 20/21	Q1 21/22	Q2 21/22	Q3 21/22
Reading	70	47	62	71	79	75	63	71

The number of children subject to Child Protection Plans open to CAMHS has also increased in the last year. In response Reading Borough Council awarded funding for a project for co-located CAMHS workers with Childrens Social Care, match funded by CCG. This team will support Children Looked After - including those placed out of area.

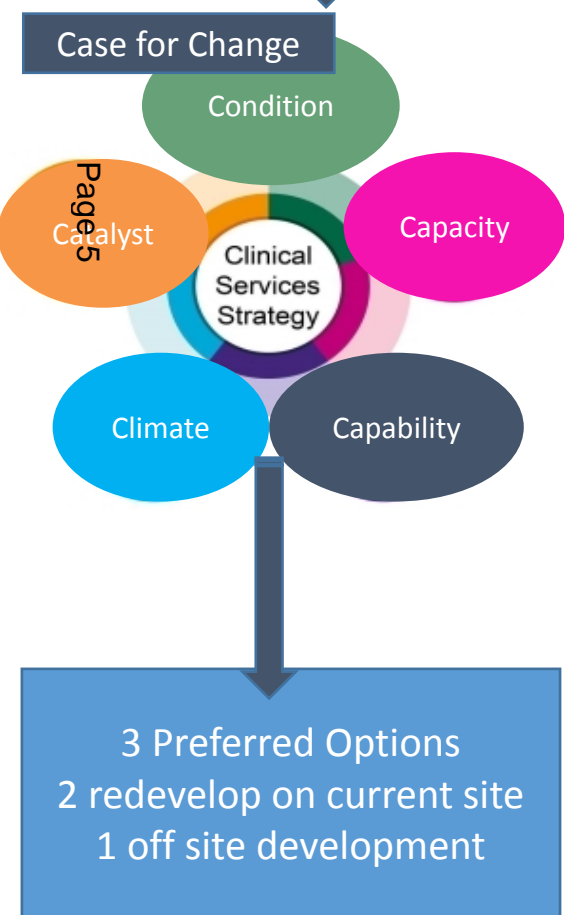
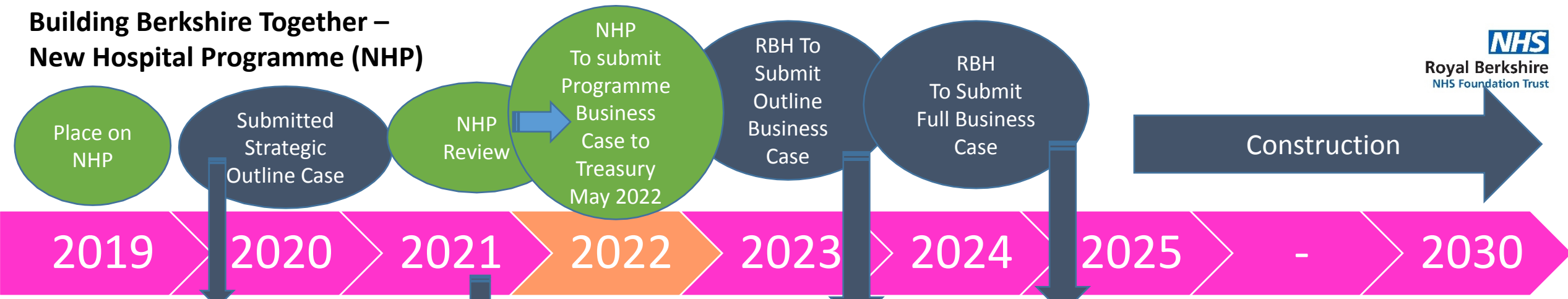
Child Protection Plan in CAMHS	Q3 20/21	Q4 20/21	Q1 21/22	Q2 21/22	Q3 21/22
Reading	76	67	77	90	95

Brighter Futures for Children, schools & local voluntary groups provide support which aims to prevent needs escalating to CAMHS thresholds. In BFfC this includes:

- The Mental Health Support Team (MHST) are currently supporting 112 children & young people and the Primary Mental Health Team have 58. A second MHST team goes live in September.
- This week we have 100 young people being supported by our targeted & specialist youth workers. All would have a holistic early help assessment which assesses and supports any emotional wellbeing needs.
- Recommissioning of Kooth - an online counselling support service available to all Reading children & young people

BFfC worked with Reading Borough Council colleagues to review the 90+ applications for the most recent Covid Support funding round. Of the £220k awarded, 12 organisations with a focus on children & families were awarded £126,477. This included No 5 Young People’s counselling service.

# Building Berkshire Together – New Hospital Programme (NHP)



- Reviewed Clinical Services Strategy
- Digital
- Space Optimisation
- Green Plan
- Further Options Development
- Recruitment
- Co-production



Procurement and Contracting for the Build

### Key Issues

- Currently on target with potential On RBH site options for between 2025-2030
- Funding is uncertain but increasingly being told is under significant pressure (Covid, EU Exit, Inflation, Supply, escalating costs in earlier phases)
- Need to make efficiencies through being on NHP
  - Standardisation
  - Modern Methods of Construction
  - Procurement at scale
- Building our network so we can involve and work with community as much as possible email [BuildingberkshiretogetherRoyalberkshire.nhs.uk](mailto:BuildingberkshiretogetherRoyalberkshire.nhs.uk)
- Website [www.Buildingberkshiretogether.com](http://www.Buildingberkshiretogether.com)

This page is intentionally left blank

# Adult Social Care Annual Performance Report for 2020-21

ACE presentation (April 2022)

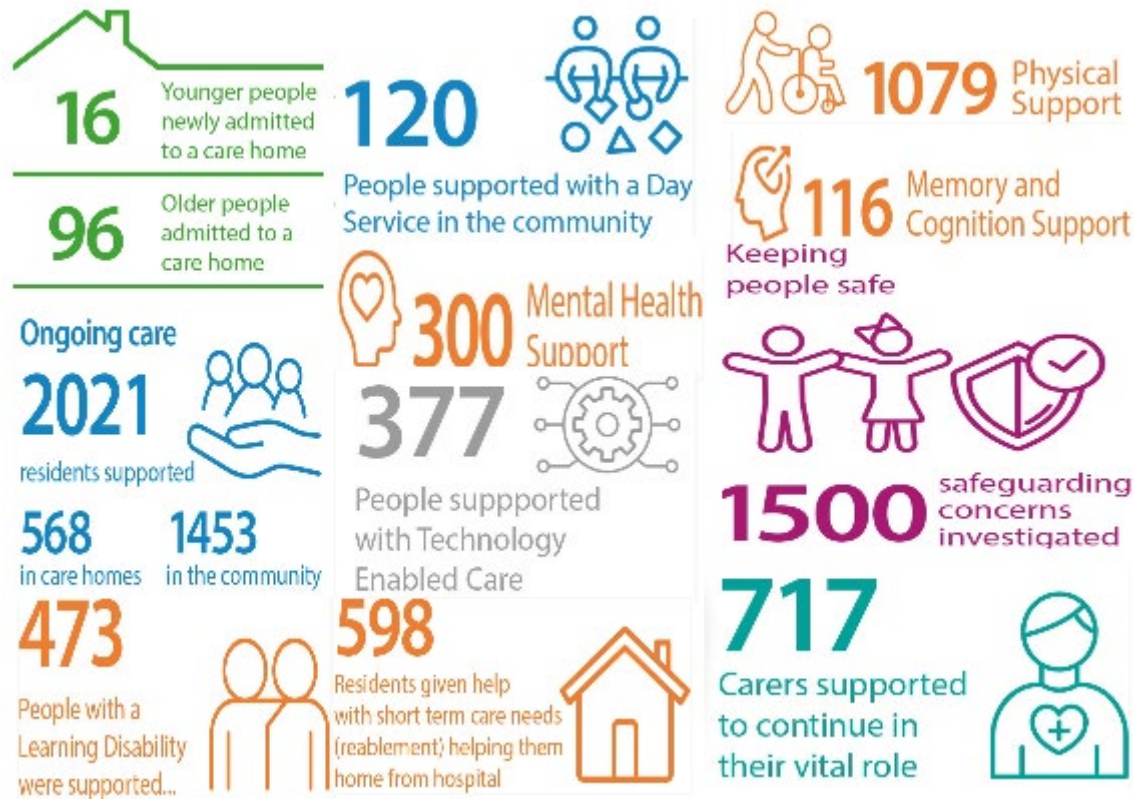


**Reading**  
Borough Council

Working better with you



# Service Overview 2020-21





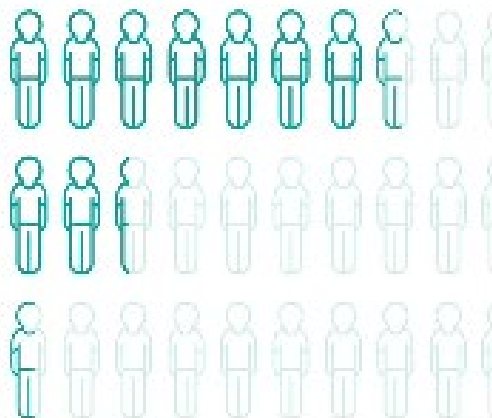
# Service Overview 2020-21

The Advice & Wellbeing Hub helps people with short term support

**78%**  
given support & signposted to other help in the community

**13%**  
helped with intervention through a short term crisis

**7%**  
assessed for ongoing support



*Your quick response, guidance and advice gave me the confidence to do the best for my mother.*

*Thank you to your Occupational Therapist for their kindness, understanding, persistence, and impressive organisational skill in helping with the equipment needed to support my friend at home*



# How is Adult Social Care Measured across England?

Short and long term (SALT)

Adult Social Care Survey

Safeguarding Adults

Carers Survey

Deprivation of Liberty Safeguards (DoLS)



# Adult Social Care Outcomes Framework 2020/21

1: Enhancing quality of life for people with care and support needs

2: Delaying and reducing the need for care and support

3: Ensuring that people have a positive experience of care and support

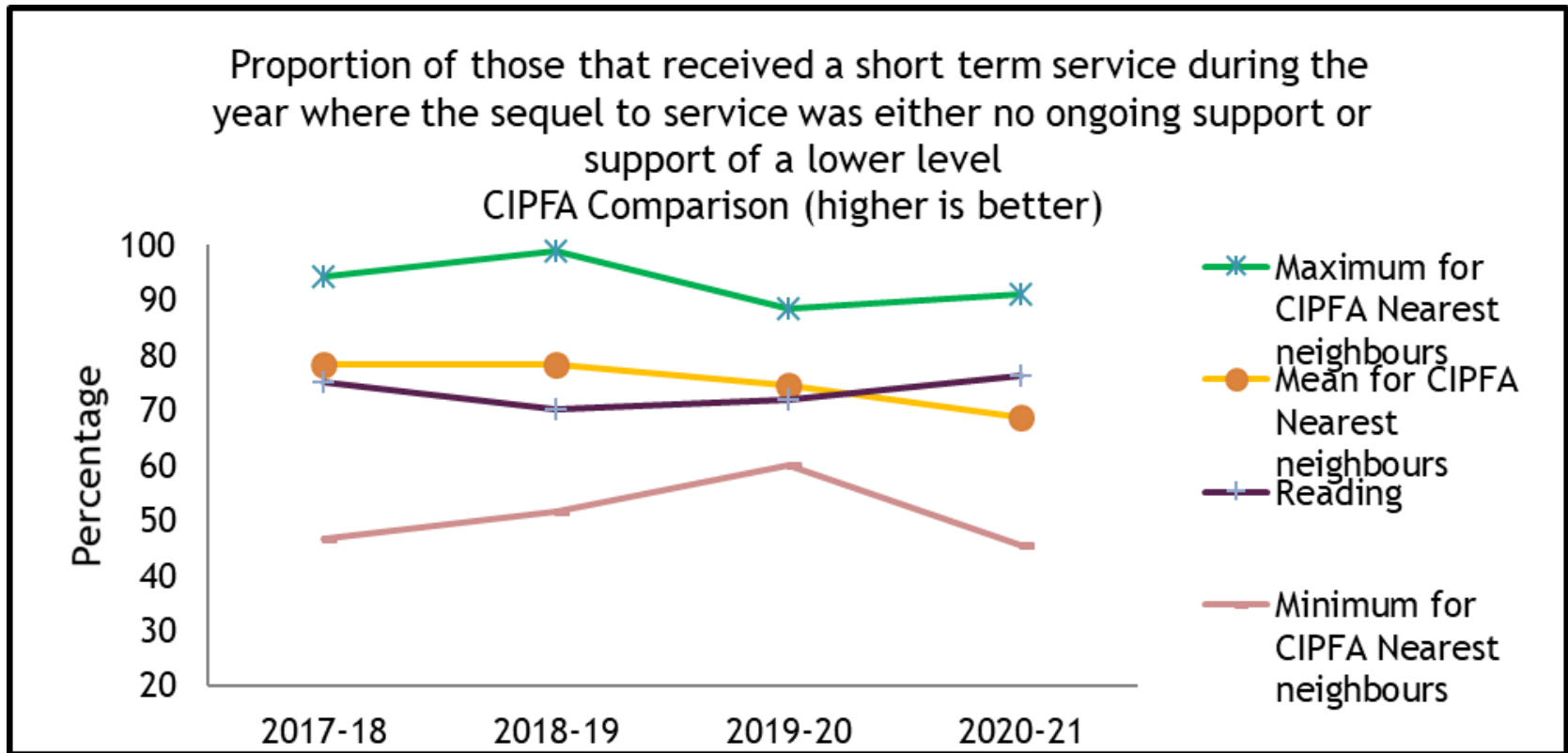
4. Safeguarding adults whose circumstances make them vulnerable and protecting them from avoidable harm



# Adult Social Care Outcomes Framework 2020/21

## 1: Enhancing quality of life for people with care and support needs

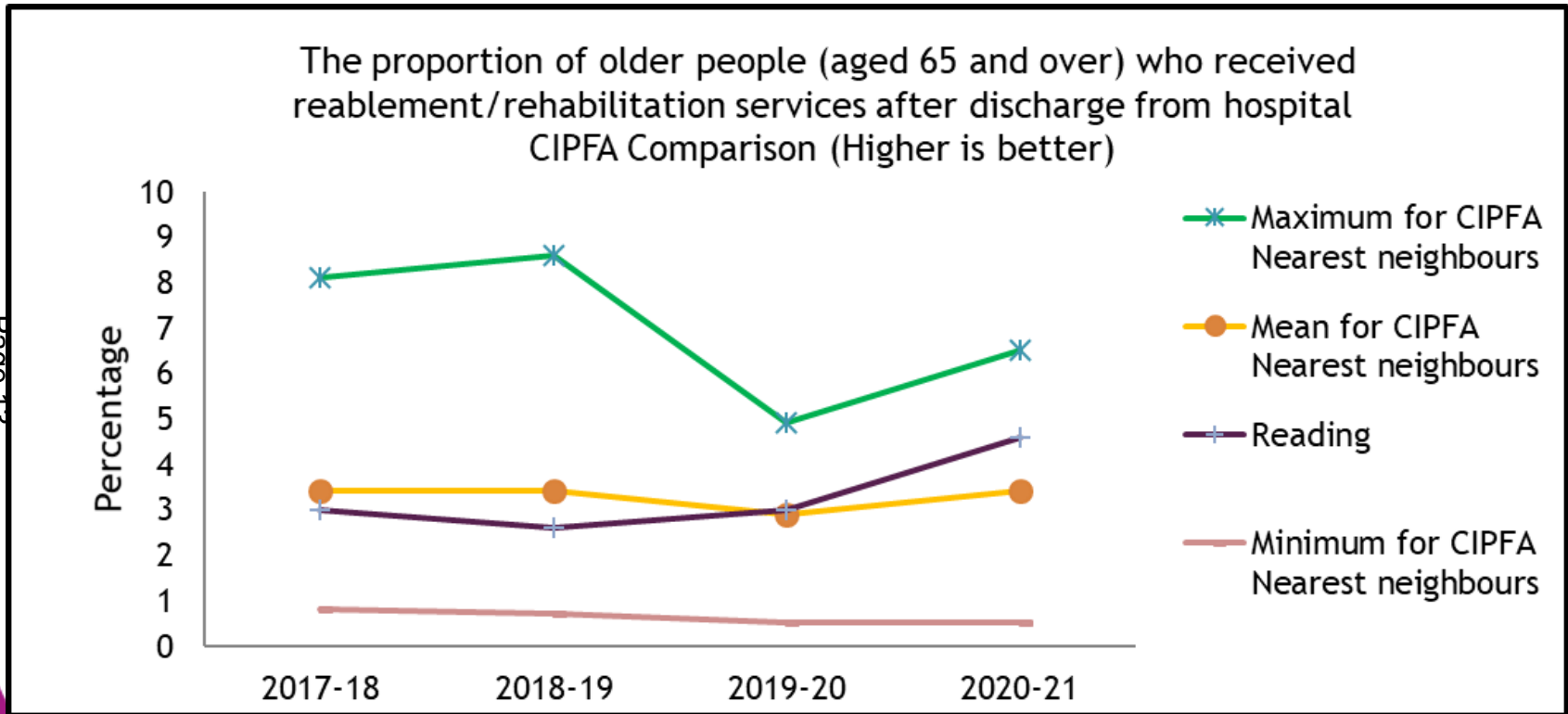
Page 12



# Adult Social Care Outcomes Framework 2020/21

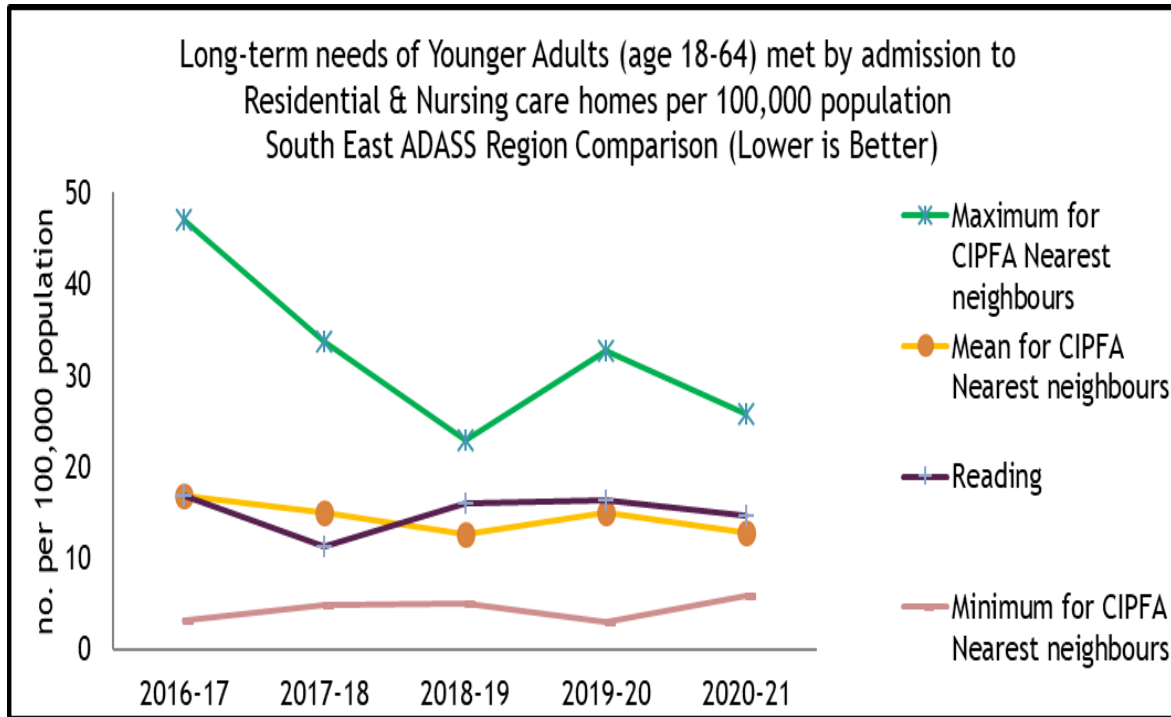
## 2: Delaying and reducing the need for care and support

Page 13



# Reducing New Admissions to Residential or Nursing Homes for older adults age 65+

Page 14



“Home First” approach

Fallen last 2 years

Lower than South East, England and Statistical near neighbours

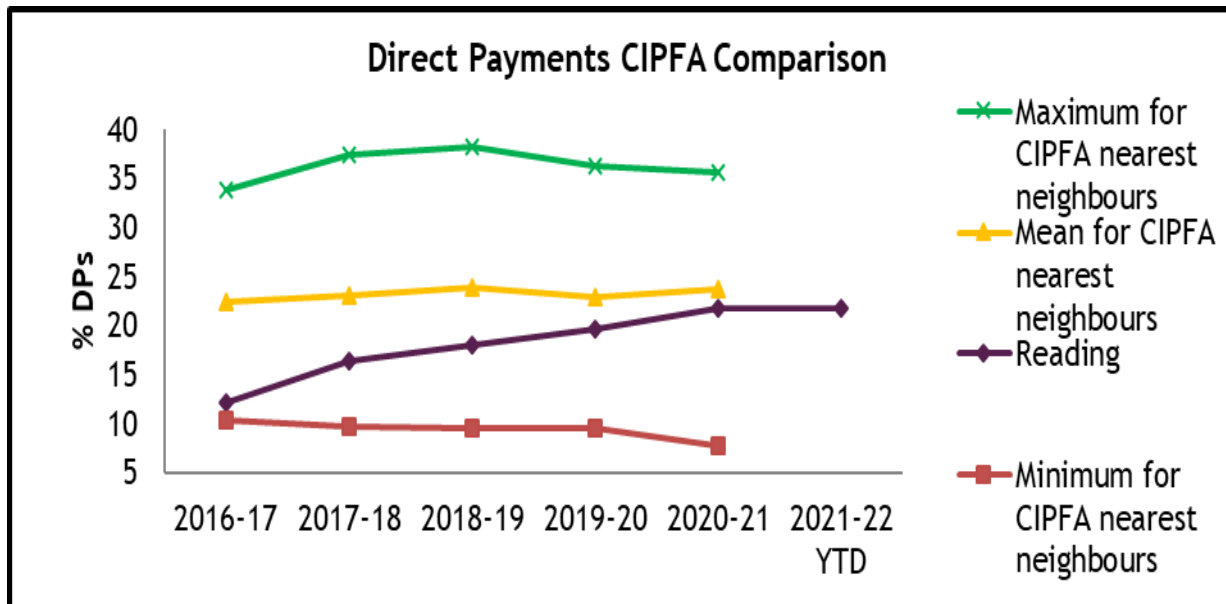


**Reading**  
Borough Council  
Working better with you

# Areas for Development

## Increase the use of Direct Payments

Page 15



Develop  
Personal  
Assistant  
marketplace  
in Reading



**Reading**  
Borough Council  
Working better with you



This page is intentionally left blank